

FREEHOLD



House - Semi-Detached

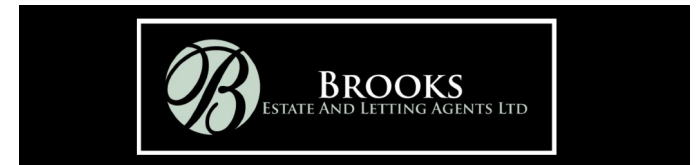
21 CONSETT ROAD, ST. HELENS, WA9 5LA

Fixed Asking Price

£190,000

FEATURES

- A lovely three bedroom traditional semi detached property
- Situated in a sought after location
- Close to schools, shops and transport links
- Entrance hall, lounge with feature fireplace
- Sitting Room and fitted kitchen
- Three good sized bedrooms
- Family bathroom with a three piece suite
- Large rear garden with patio, lawn and garden shed
- Parking at the front for two vehicles



3 Bedroom House - Semi-Detached located in St. Helens

A substantial traditional semi-detached property located in a highly sought-after area, conveniently close to excellent local schools, shops, and transport links.

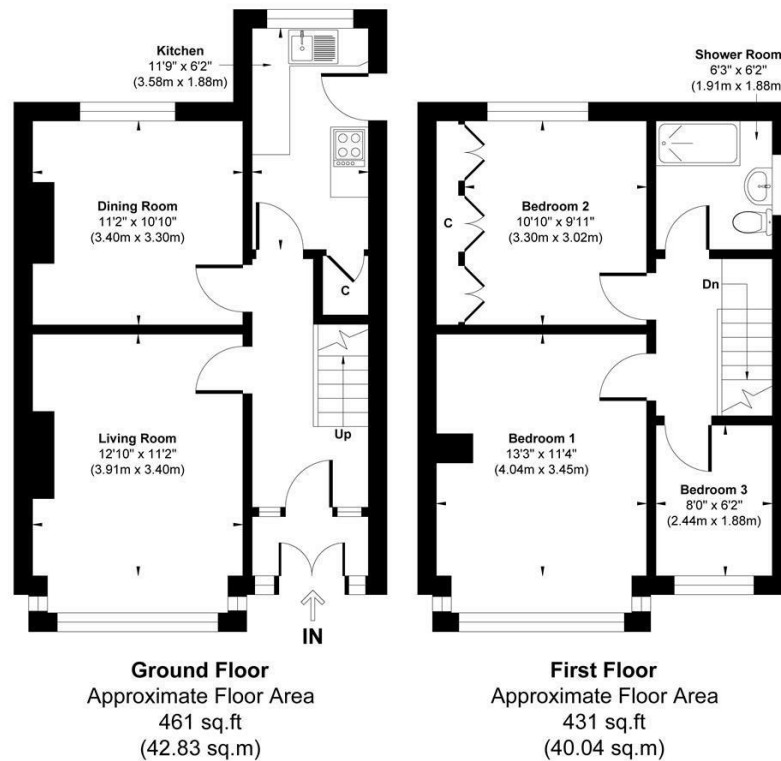
The well-presented accommodation briefly comprises an inviting entrance hall, a spacious lounge featuring an attractive fireplace, a versatile sitting/dining room, and a fitted kitchen.

To the first floor, there are three well-proportioned bedrooms and a family bathroom fitted with a modern three-piece suite.

Externally, the property benefits from a generous rear garden, complete with a patio seating area, lawn, and garden shed, providing an ideal space for relaxing or entertaining. To the front, there is ample off-road parking for two vehicles.

This is an excellent family home in a desirable location, and early viewing is highly recommended.

EPC Rating: D



Approx. Gross Internal Floor Area 892 sq. ft / 82.87 sq. m

Whilst every attempt has been made to ensure the accuracy of the floor plan shown, all measurements, positioning fixtures fittings and any other data shown are an approximate interpretation for illustrative purposes only and are not to scale. No responsibility is taken for any errors, omission, miss-statement or use of data show.

Call us on

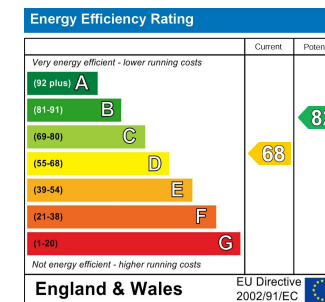
0151 329 3313

prescot@brooksestateandlettings.co.uk

www.brooksestateandlettings.co.uk

Council Tax Band

C



Agents Note: Whilst every care has been taken to prepare these particulars, they are for guidance purposes only. All measurements are approximate and are for general guidance purposes only and whilst every care has been taken to ensure their accuracy, they should not be relied upon and potential buyers are advised to recheck the measurements.

